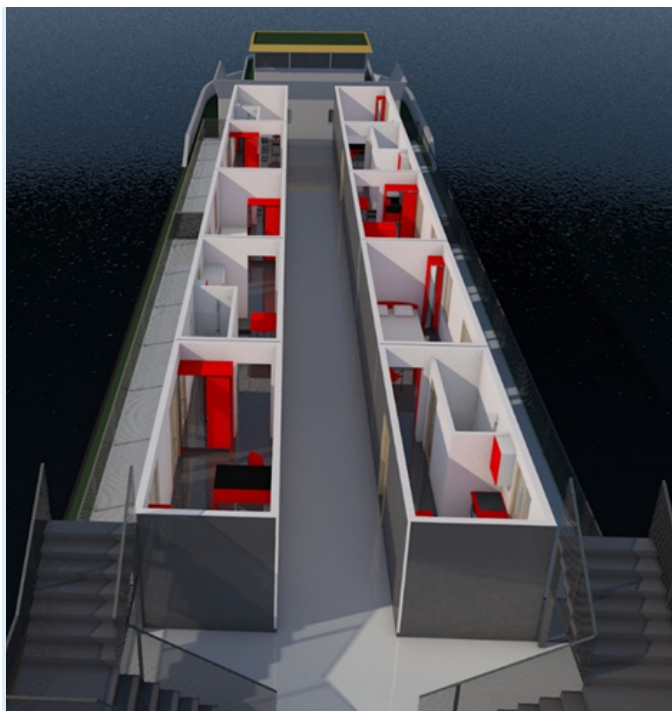
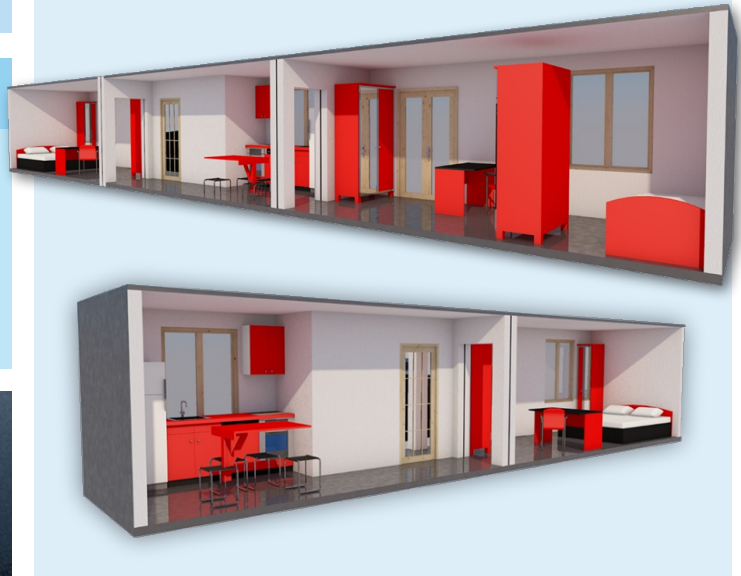


## Urban pop-up housing environments and their potential as local innovation systems

## DONAUTONOM BINNEN BLEIBEN

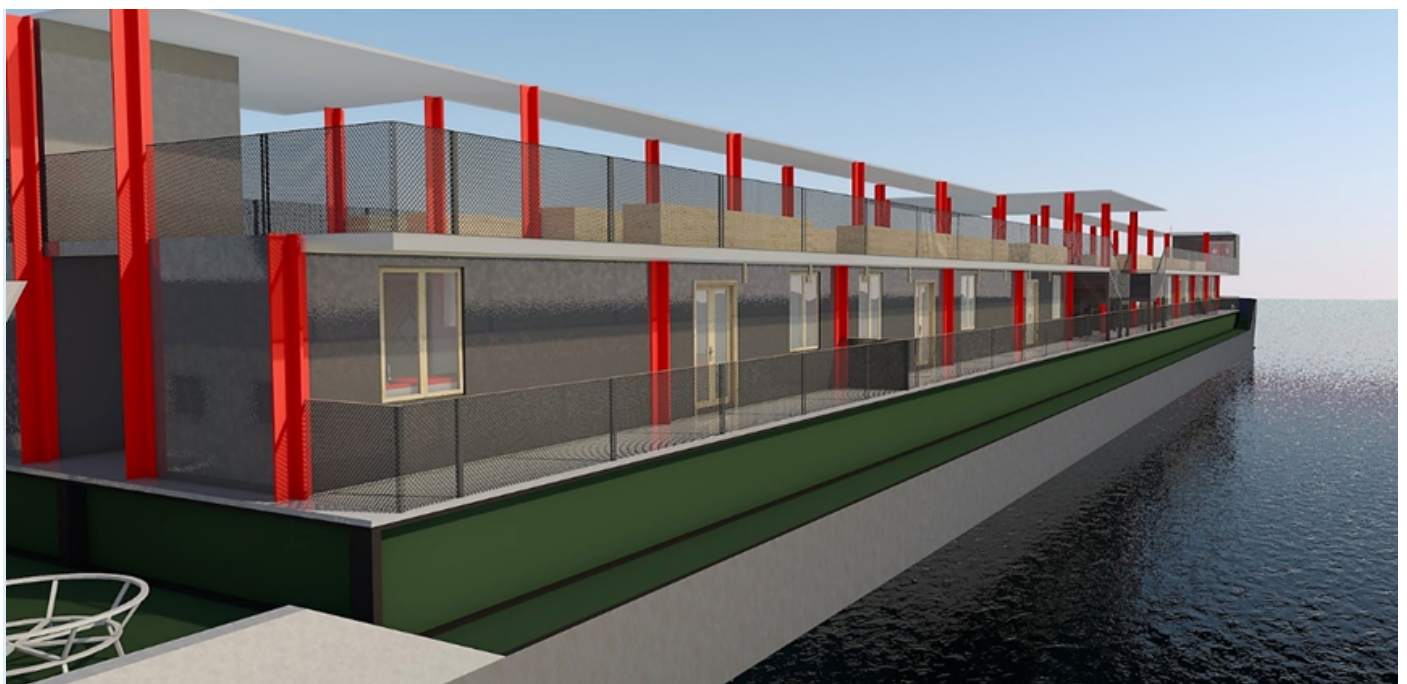
### APPROACH

|                   |   |
|-------------------|---|
| <b>Purpose</b>    | Temporary living in cargo ship                                  |
| <b>User group</b> | People interested in sustainable and resource autonomous living |
| <b>Usage time</b> | Up to three months per resident                                 |
| <b>Lifetime</b>   | Up to three years moored  |
| <b>Capacity</b>   | Scenario for up to 20 people                                    |



### BUILDING

|                        |  |
|------------------------|--|
| <b>Characteristics</b> | Aiming for self-sufficiency and autonomy regarding resources, energy and food supply |
| <b>Design</b>          | Efficient utilization of the limited space   |
| <b>Main Materials</b>  | Repurposed ISO (shipping) containers<br>Sliding doors<br>Sliding wall segments       |
| <b>Size</b>            | Two or three containers per unit<br>1 to 4 people per housing unit                   |



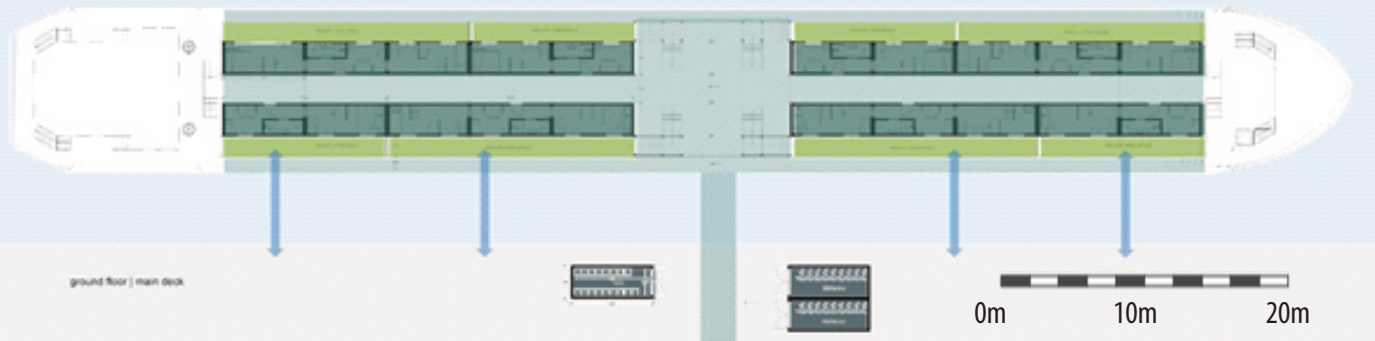
# DONAUTONOM BINNEN BLEIBEN



## 1st floor | raised beds

- Productive area (high raised beds; approx. 73 m<sup>2</sup>)
- Communal area for gatherings (approx. 100 m<sup>2</sup>)

- Access area (approx. 300 m<sup>2</sup>)
- Shed (approx. 20 m<sup>2</sup>)



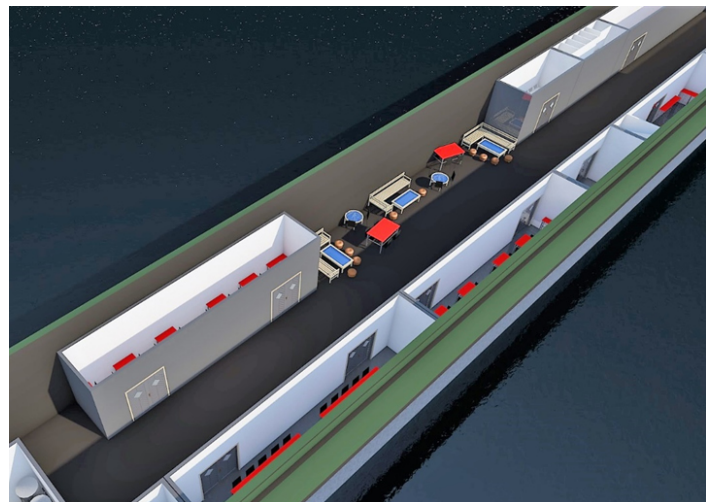
## Ground floor | main deck

- Private semi-open space: loggia (18- 27m<sup>2</sup>)
- Private units for 2-3 users
- Access area (approx. 325m<sup>2</sup>) and landing stage

- Public open space (quay)
- Bike Storage and garbage facilities
- Possible conflicts (private-public)

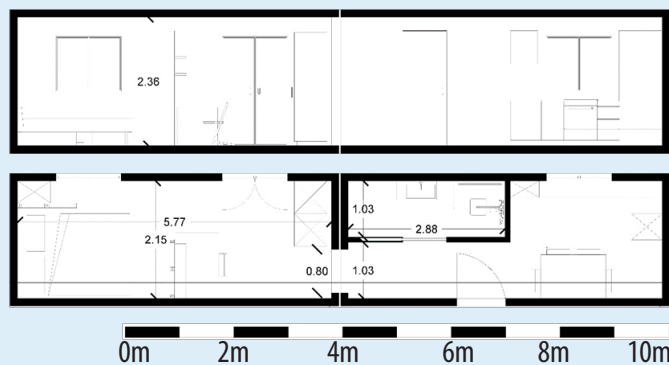
## RESOURCES

|                              |   |
|------------------------------|---|
| <b>Power supply</b>          | Photovoltaics on the ship   |
| <b>Electric installation</b> | Building management system  |
| <b>Heating</b>               | Water heat pump   |
| <b>Ventilation</b>           | Integrated into window frame  |
| <b>Water supply</b>          | Water treatment unit for river water and collected rain water/external water supply |
| <b>Water heating</b>         | Electric flow heaters   |
| <b>Sanitation system</b>     | Greywater and blackwater system operated with river or rain water                   |



## SITE

|                      |   |
|----------------------|---|
| <b>Preconditions</b> | Berth for ship<br>Accessibility of public transport<br>Accessibility of social infrastructure   |
| <b>Open space</b>    | Private: loggia – 18-27m <sup>2</sup> /apartment<br>Communal: Area for gatherings (roof terrace)<br>Productive area (high raised beds)<br>Access area |



Adapted from the original design of Dembski and Woessner

PROJECT PARTNERS



W|W|T|F

VIENNA SCIENCE AND TECHNOLOGY FUND

The project ESR17-010 has been funded by the Vienna Science and Technology Fund (WWTF).