

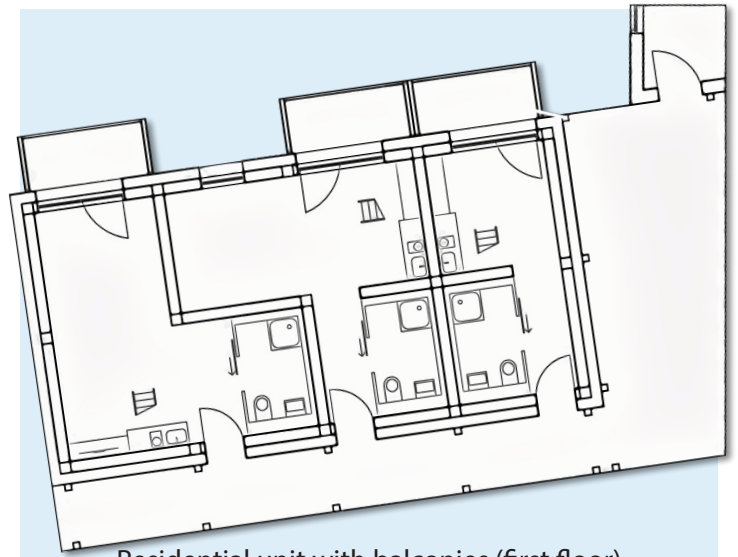
## Urban pop-up housing environments and their potential as local innovation systems

### APPROACH

<b>Purpose</b>	Temporary housing in vacant lots
<b>User group</b>	User mix – people interested in communal living and people with limited housing options
<b>Usage time</b>	Two to five years
<b>Lifetime</b>	Multiple assembly and disassembly phases
<b>Capacity</b>	Scenario for up to 31 people



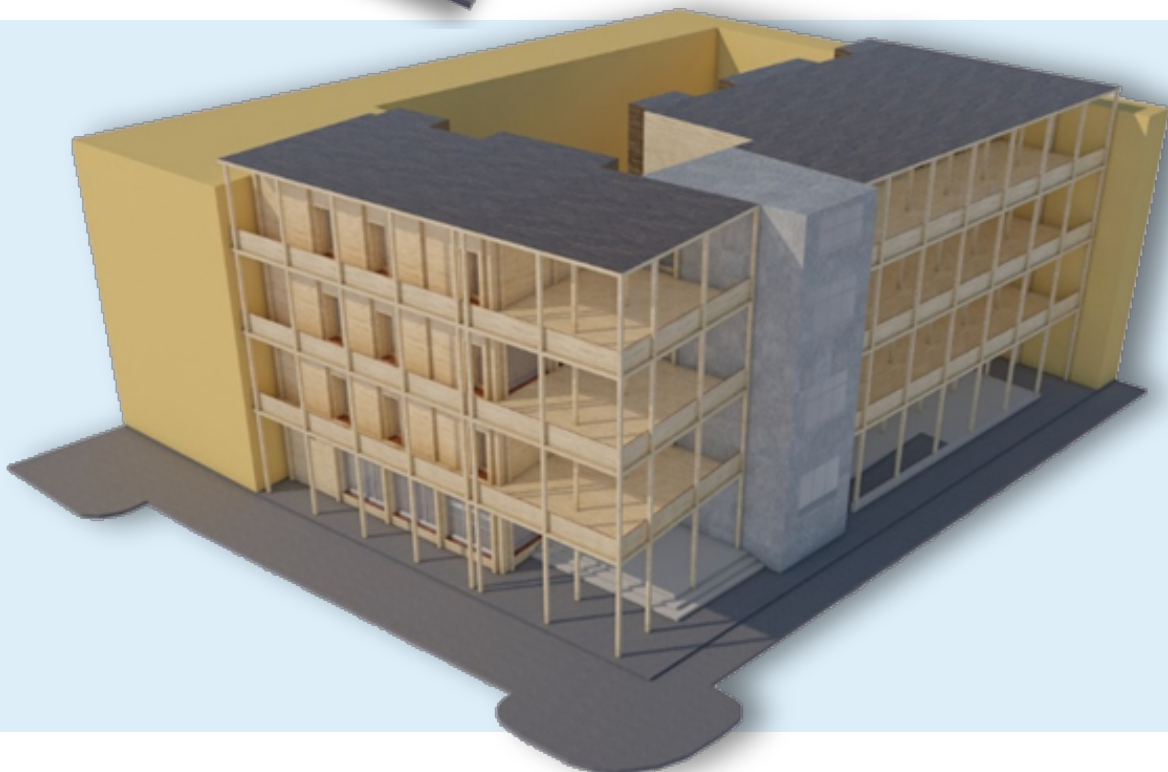
## GAP MODULE GAPSOLUTELY FITTING



Residential unit with balconies (first floor)

### BUILDING

<b>Characteristics</b>	Based on modular components consisting of prefabricated elements
<b>Design</b>	Easy transport Reusable modules Deconstruction with low wear and tear Allows different living constellations
<b>Main Materials</b>	Wooden columns Cross-laminated timber Nut and bolt fixation Reinforced concrete
<b>Size</b>	1 to 6 people per housing unit



# GAP MODULE GAPSOLUTELY FITTING



## RESOURCES

<b>Power supply</b>	Grid connection/Photovoltaics
<b>Electric installation</b>	Building management system
<b>Heating</b>	Air-water heat pump (AWHP)
<b>Ventilation</b>	System with heat exchanger
<b>Water supply</b>	Public water network
<b>Water heating</b>	AWHP/elect. heating cartridge
<b>Sanitation system</b>	Sewage connection



## SITE

<b>Preconditions</b>	<ul style="list-style-type: none"> <li>Accessibility of public transport</li> <li>Accessibility of social infrastructure</li> <li>Vacant lot free of preexisting structures</li> </ul>
<b>Open space</b>	<ul style="list-style-type: none"> <li>Private: loggias towards inner courtyard</li> <li>Communal: terrace</li> <li>Green area, cultivation area</li> <li>Access area, graveled path</li> <li>Bike storage room</li> <li>Involvement of the neighborhood is encouraged by communal open space concept</li> </ul>



Adapted from the original design of Friedwagner and Prömpers

PROJECT PARTNERS



W|W|T|F

VIENNA SCIENCE AND TECHNOLOGY FUND

The project ESR17-010 has been funded by the Vienna Science and Technology Fund (WWTF).